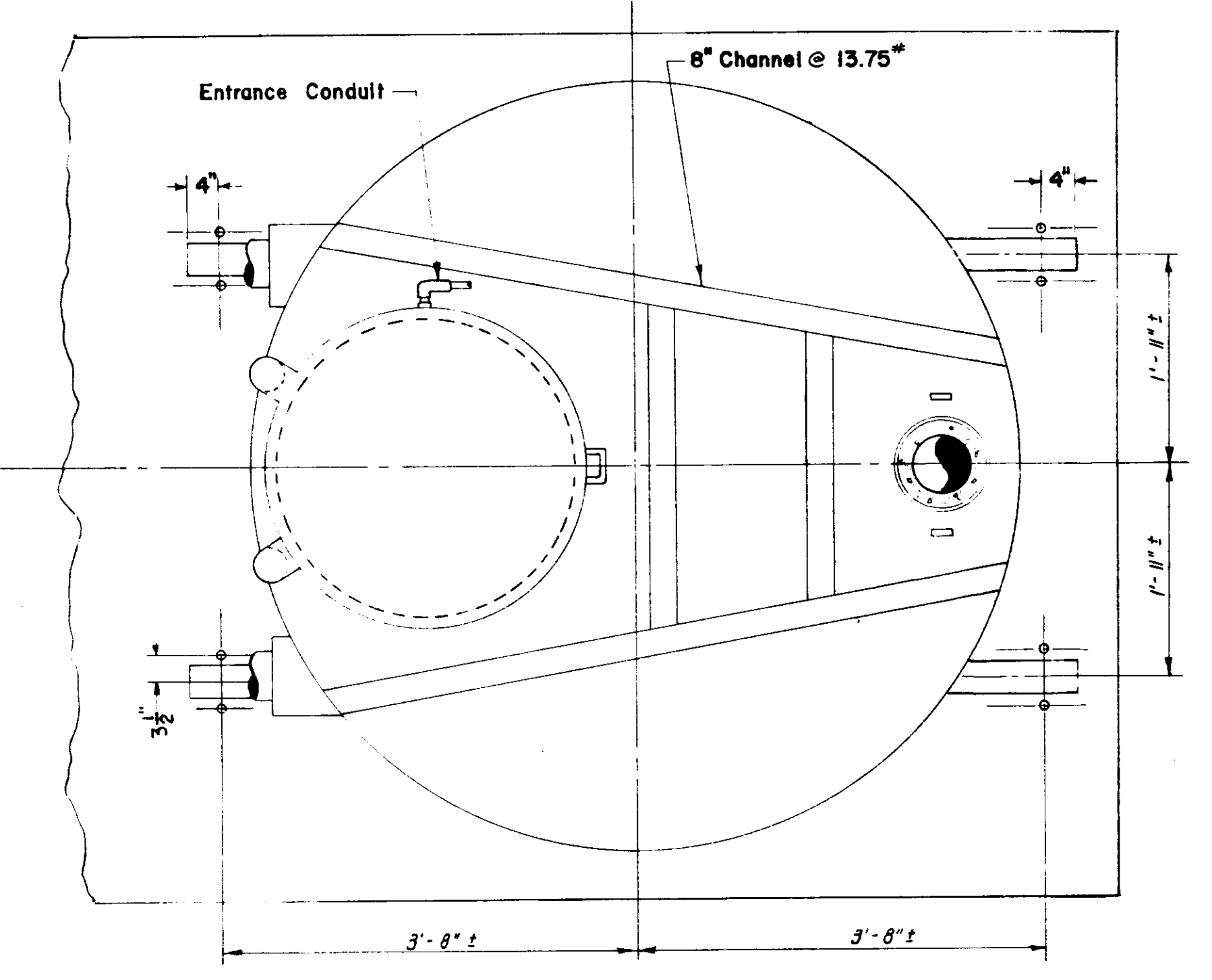


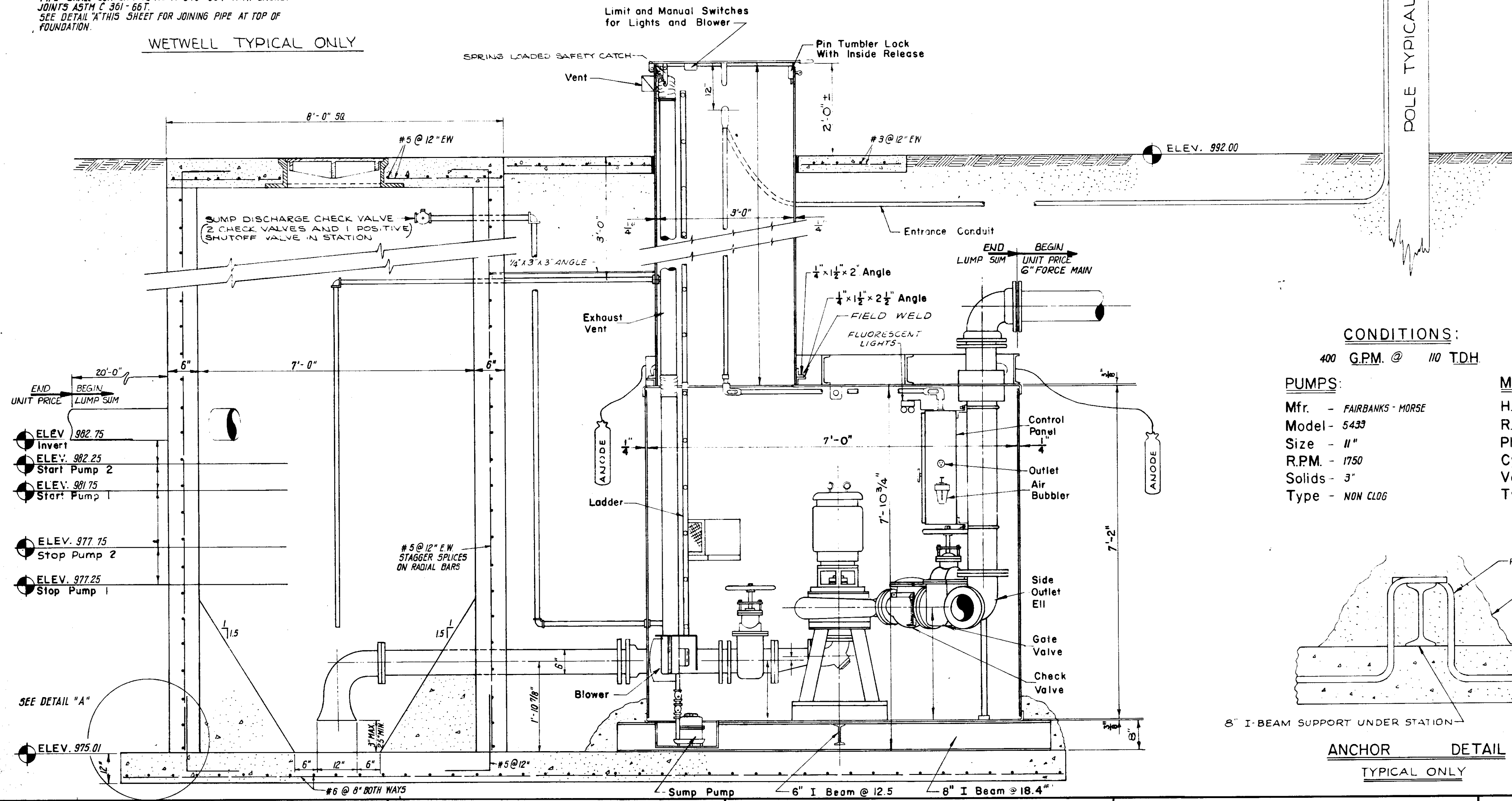
PLAN



TOP LAYOUT

NOTE:
 AT THE OPTION OF THE CONTRACTOR CONCRETE PIPE MAY BE USED FOR THE WET WELL.
 PIPE SHALL CONFORM TO ASTM C 76-65T WITH GASKET JOINTS ASTM C 361-66T.
 SEE DETAIL "A" THIS SHEET FOR JOINING PIPE AT TOP OF FOUNDATION.

WETWELL TYPICAL ONLY

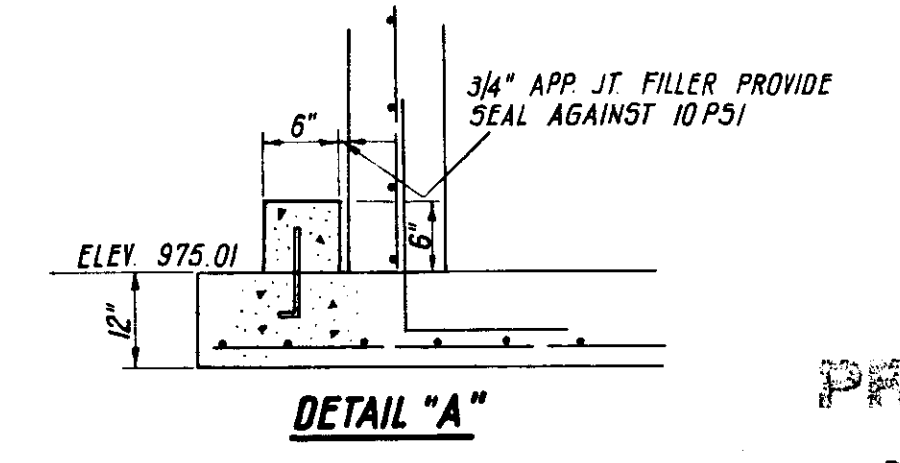
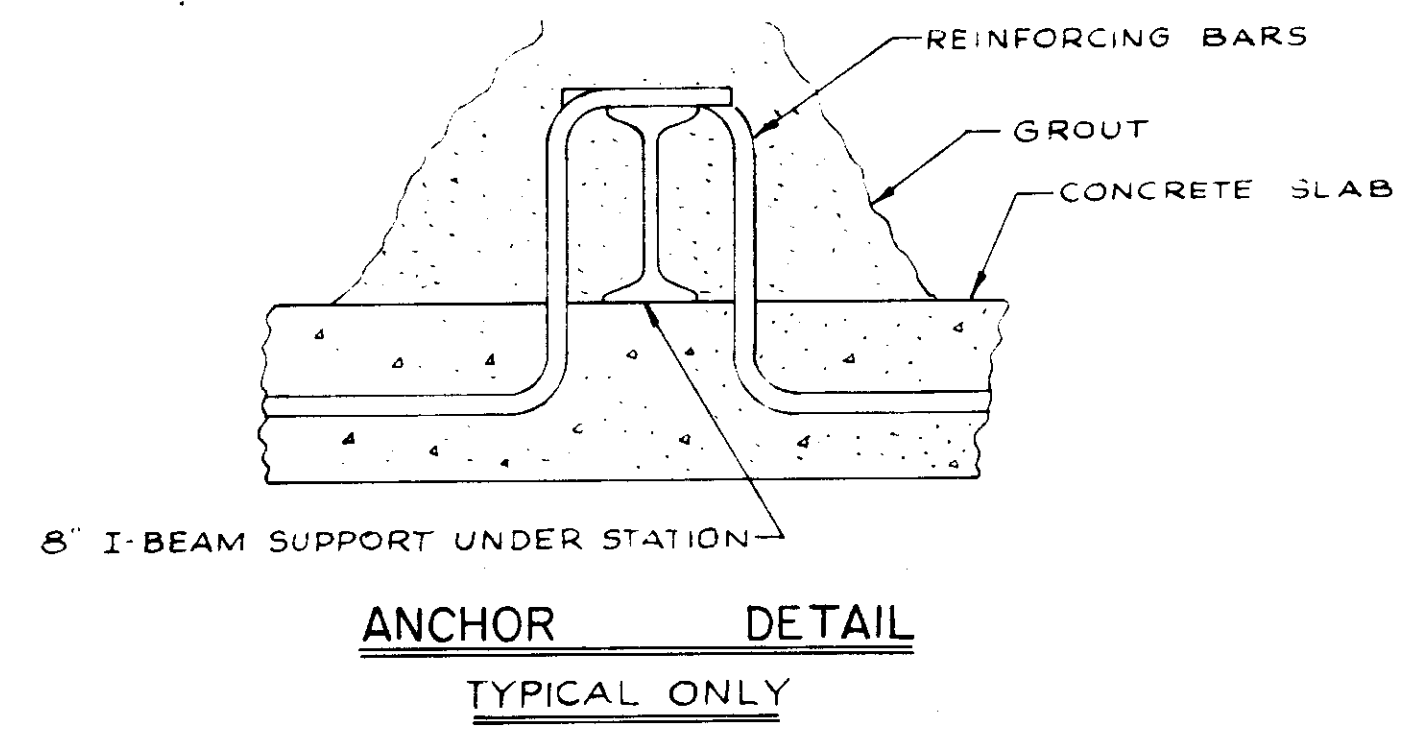


CONDITIONS:
 400 G.P.M. @ 110 TDH

PUMPS:
 Mfr. - FAIRBANKS - MORSE
 Model - 5433
 Size - 11"
 R.P.M. - 1750
 Solids - 3"
 Type - NON CLOG

MOTORS:
 H.P. - 30
 RPM - 1750
 Phase - 3
 Cycle - 60
 Volt - 440
 Type - D.D.P.

NOTE:
 1. Welding—All structural steel members shall be joined by electric arc welding with fillets adequate for the joint involved. All inserts in the station chamber shall be welded inside and out where the cast iron suction and discharge lines pass through the station walls. They shall be reinforced with 1/4" thick sleeves welded inside and out to the station walls. The void between the cast iron pipes and the steel sleeves shall be packed with cement grout containing embecco to prevent leakage.



BOOK 4 V PAGE 77

PRINTED

DEC 1 1970

DAVIS AND FLOYD ENGINEERS, INC.
 CONSULTING ENGINEERS
 GREENWOOD, S. C. ATLANTA, GA.

TOWN OF TRAVELERS REST, S.C.

TITLE
PUMPING STATION

DESIGNED:		SCALE:	NOT TO SCALE	CONTRACT NO.:	294
DRAWN:		DATE:	JULY 1968	SH. OF	18 OF 43
CHECKED:		REVISIONS:			
APPROVED:		BY:			